

# Ascend

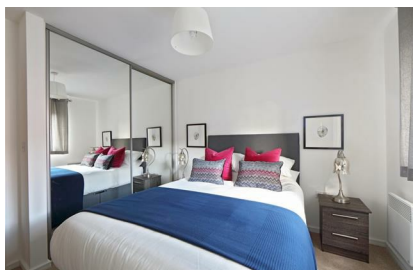
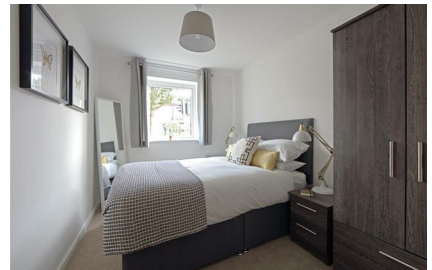
Built on higher standards



## 9C Petal Court Manchester M28 3YN

- Allocated parking space
- Secure-By-Design windows and doors
- Fitted wardrobes to master bedroom
- Dishwasher
- Fridge freezer
- Washing/drying machine
- Oven and hob
- Light caramel carpet in the bedrooms
- Grey full length curtains in the living room

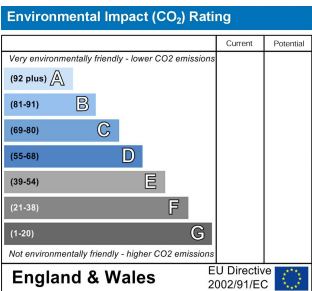
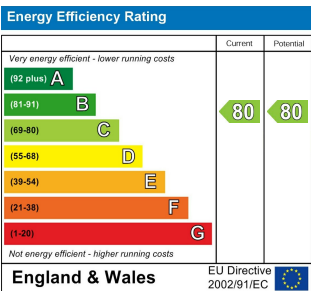
## £910 PCM



Welcome to Heyfields. Located in Walkden, Heyfields is an impressive new development of 66 family homes and 72 apartments, 7 miles from Manchester city centre. Set in a picturesque location and within easy reach of the city centre, this development is ideal for both growing families and young professional couples.

Elegant by name, elegant by nature, our Washington apartments are spacious, modern and energy efficient. At the heart of this home is the contemporary open-plan kitchen, which merges space with the comfortable living and dining areas. Down the hallway, you have two beautiful double bedrooms and the generously sized bathroom. Light colour wood and pale interiors throughout add to the spacious feel. Quality flooring and blinds combine with secure-by-design windows and doors, and feature fitted alarm systems for extra peace of mind.

Deposit £1050  
Unfurnished  
Council Tax: A  
Available 17th February 2025



# Ascend

Built on higher standards

0161 707 7584

192 Monton Road, Monton, Manchester,  
M30 9PY

monton.sales@ascendproperties.com,  
monton.lettings@ascendproperties.com  
www.ascendproperties.com



These particulars, whilst believed to be accurate are set out as a general outline only for guidance and do not constitute any part of an offer or contract. Intending purchasers should not rely on them as statements of representation of fact, but must satisfy themselves by inspection or otherwise as to their accuracy. No person in this firm's employment has the authority to make or give any representation or warranty in respect of the property